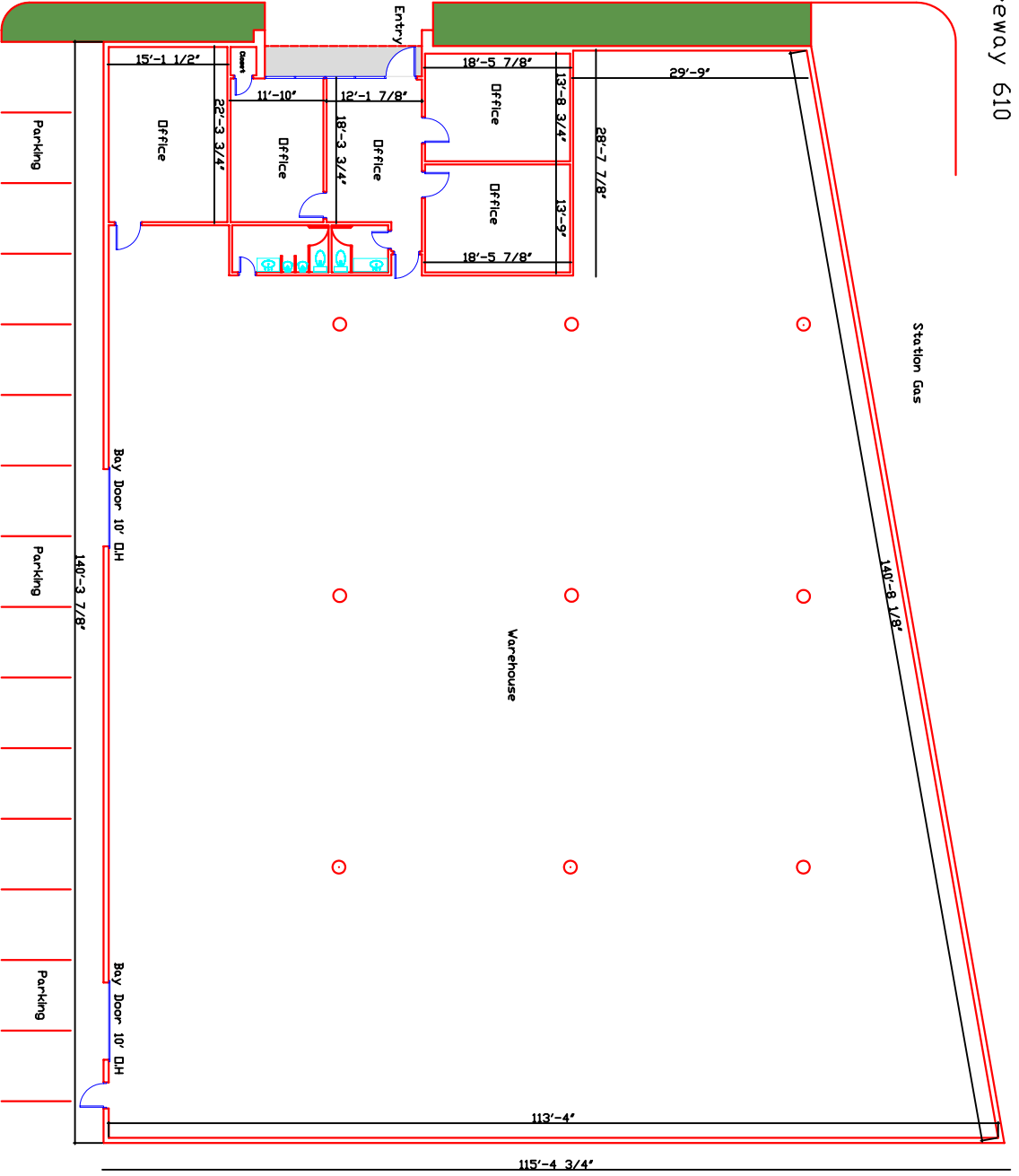


Freeway 610

Station Gas

140'-8 1/8"

Inner Street  Towards Freeway 610



Inner Street  Towards Wallisville Street

Guardian Management
9155 Wallisville

Approximate Area	
Offices Sq. Ft.	1662
Warehouse Sq. Ft.	12688
Total Area Sq. Ft.	14350

Rear Load - Bay Door in Back.
Construction tilt-up in
Concrete.
Clear Height 18'.
Covered Entry.

Drawn by Architect/Engine 5-2-20