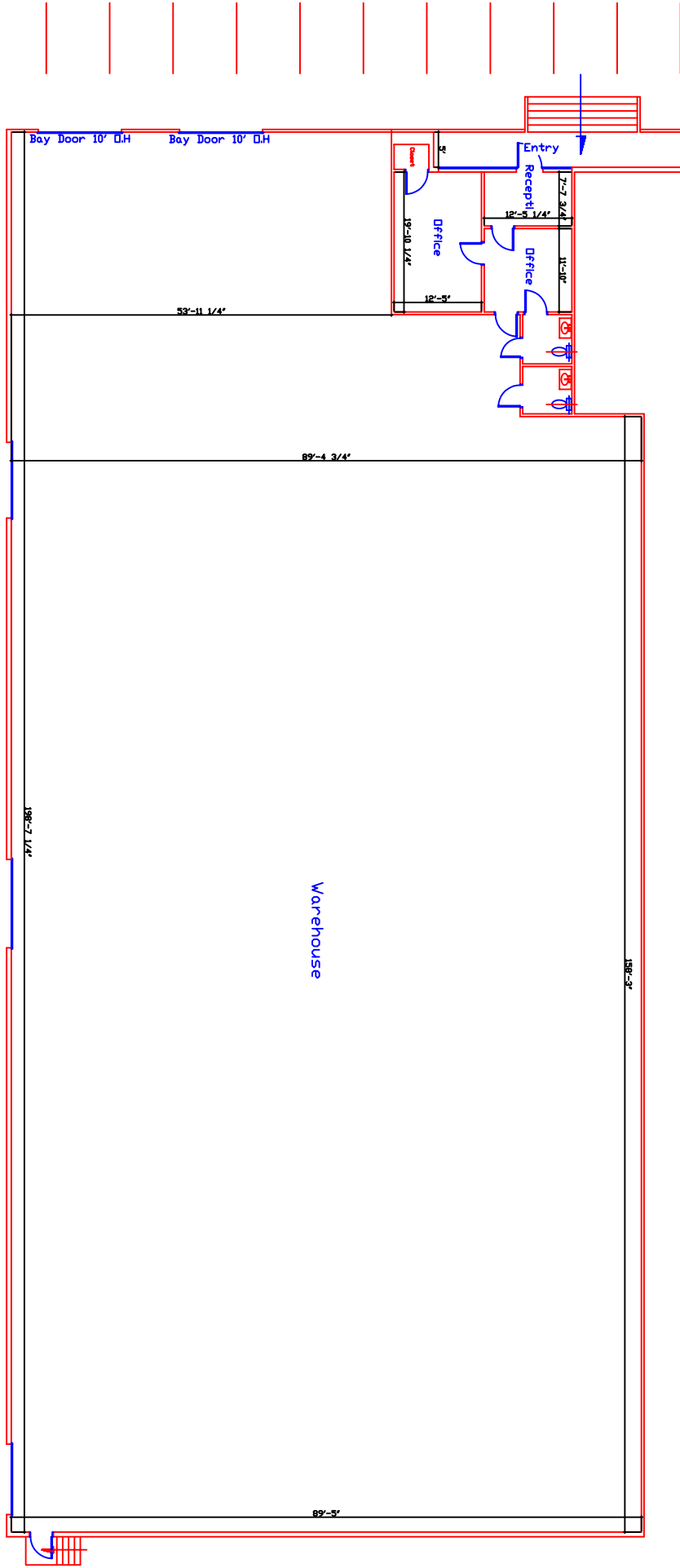


Towards Street Wallsville Road →



Guardian Management		
9135 Wallsville Road Suite B		
Approximate Area		
Offices Area.....	668	
Warehouse Area.....	16,863	
Total Area Sq.Ft....	17,531	
Grade Level, Rear Load, Tilt-up Concrete Construction, All Clear Height, All Clear Floor, Ground Entry, Front Bay Door and Offices, Halt Dock 4' up Cannot Driveln, Sprinkler System.		
Draw Architect Gado Torres 3/14/07		